

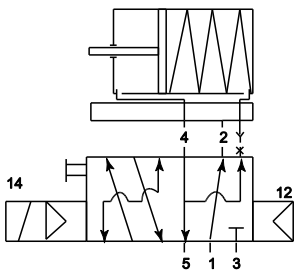
Pilot-operated 3/2- and 5/2-way spool valves with threaded ports and a NAMUR style interface with air purging function. By adding the conversion plate supplied with each valve, the device can be adapted to 3/2-way function.

Medium:	Air, neutral gases, filtered
Operating temperature:	-20 °C to +50 °C
Working pressure:	1.5 to 10.0 bar (552.11 and 552.12) 2.5 to 10.0 bar (552.21 and 552.22)
Power input:	3 W= / 5 VA~
Housing:	Anodised aluminium
Spool:	Stainless steel
Sealant:	NBR
Electrical connection:	Plug connector PG 9
Included with the product:	Plug connector PG 9, conversion plate, screws and seal
Manual control:	latching

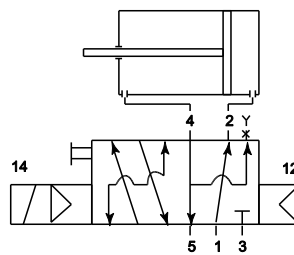


3/2-and 5/2-way spool valves with NAMUR style interface and air spring

Art. No.	Type No.	Voltage	Port 1	Port 3+5	Flow rate l/min	DN
103653	552.11	230 V, 50 Hz	G 1/4	G 1/4	1250	7
103654	552.12	24 V DC	G 1/4	G 1/4	1250	7



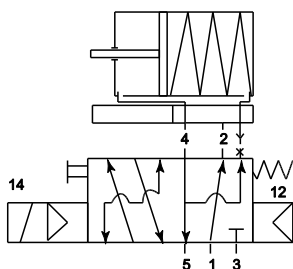
3/2



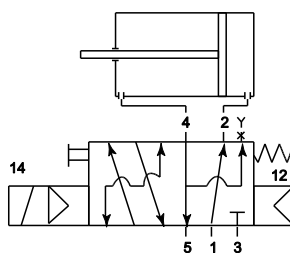
5/2

3/2- and 5/2-way spool valves with NAMUR style interface and combined spring return

Art. No.	Type No.	Voltage	Port 1	Port 3+5	Flow rate l/min	DN
103655	552.21	230 V, 50 Hz	G 1/4	G 1/4	1250	7
103656	552.22	24 V DC	G 1/4	G 1/4	1250	7



3/2



5/2

Dimension:

